



ALPHA DATA

DESIGN, DEVELOP, DEPLOY

ALPHA-DATA.COM

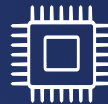
ADM-PA100

A highly flexible and adaptable data processing unit, designed for early development and rapid deployment of solutions for high performance applications.

The ADM-PA100 board is a ready-to-use acceleration platform for the cutting-edge AMD Xilinx Versal ACAP devices, ideal for data capture and processing applications, CPU offload acceleration, and low-latency networking and analytics.



Unprecedented on-board computing power featuring high performance Scalar, Intelligent and Adaptable engines



AMD Xilinx XQR Versal AI Core VC1902 ACAP, featuring 400 AI Engines for maximum DSP and AI acceleration performance



PCIe form factor, suitable for desktop, lab, rack mount and data center deployments in commercial temperature ranges. Also capable of stand-alone deployment



Featuring an FMC+ interface for a wide range off-chip FMC IO connection

**AMD****XILINX**

UK Office

Suite L4A, 160 Dundee Street,
Edinburgh, EH11 1DQ, UK
Phone: +44 131 558 2600

US Office

10822 West Toller Drive, Suite 250
Deer Creek Technology Center, Littleton,
CO 80127, Phone: (303) 954 8768

Contact us

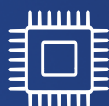
sales@alpha-data.com
www.alpha-data.com



ADM-PCIE-9V5

A high-performance reconfigurable computing card for high-speed Data Center applications, including low latency and high-frequency trading.

The ADM-PCIE-9V5 board is a ready-to-deploy board. A critical combination of AMD Xilinx Virtex UltraScale+ VU9P-3 FPGA power and maximum front panel Ethernet connectivity options, potentially supporting up to thirty-two 10GbE interfaces, in a single slot PCIe Gen3 x8 3/4 length board. The result is a low latency, high throughput and high density compute solution.



AMD Xilinx Virtex
UltraScale+ VU9P-3 FPGA



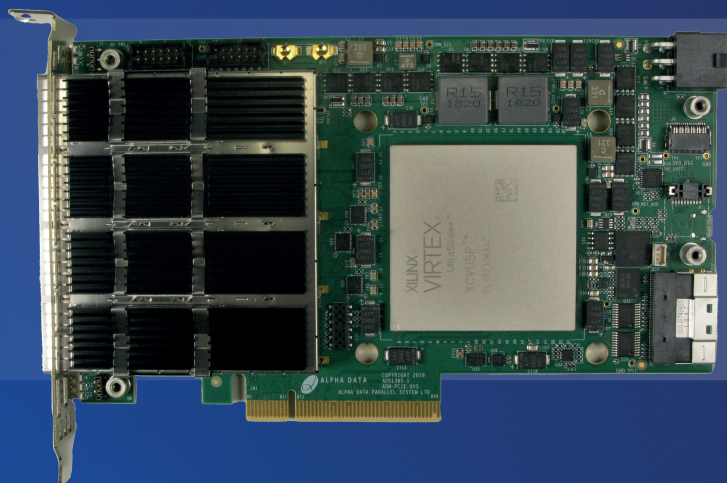
Single Slot 1/2 Length, Full Height,
x8 PCIe Form Factor



System monitoring microcontroller for
accurate power utilization feedback



896 Gbps capacity (4x QSFP-DD cages, 32 channels)
Ultraport SlimSAS connectors compliant with
OpenCAPI and suitable for IO expansion
Optional Firefly Interface


AMD
XILINX

UK Office

Suite L4A, 160 Dundee Street,
Edinburgh, EH11 1DQ, UK
Phone: +44 131 558 2600

US Office

10822 West Toller Drive, Suite 250
Deer Creek Technology Center, Littleton,
CO 80127, Phone: (303) 954 8768

Contact us

sales@alpha-data.com
www.alpha-data.com





DESIGN, DEVELOP, DEPLOY

Established in 1993 and with offices in the US and UK, Alpha Data is the leading global supplier of state-of-the-art solutions targeted at compute-intensive applications, including high performance COTS reconfigurable platforms and support software.

A leading provider of AMD Xilinx FPGA-based plug-in acceleration, SoC, RFSoc and embedded computing solutions, Alpha Data caters to deployment in Extreme environments, including Space and New Space markets.

We support clients worldwide to take projects from the design board to production and deployment, and specialise in solutions for Rugged and Embedded Communications, High-Reliability Development, Digital Signal Processing and High Performance Computing.

UK Office

Suite L4A, 160 Dundee Street,
Edinburgh, EH11 1DQ, UK
Phone: +44 131 558 2600

US Office

10822 West Toller Drive, Suite 250
Deer Creek Technology Center, Littleton,
CO 80127, Phone: (303) 954 8768

Contact us

sales@alpha-data.com
www.alpha-data.com

